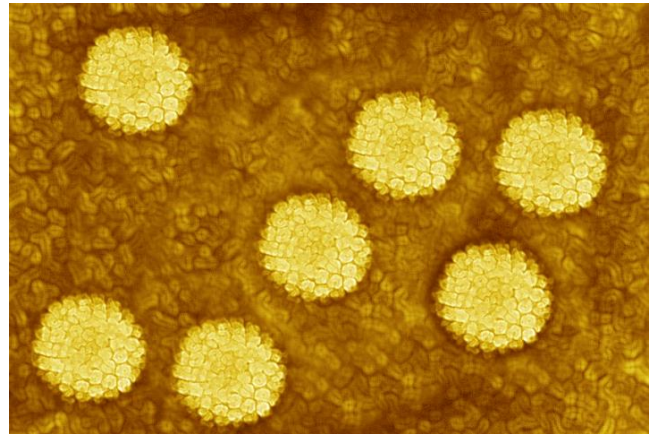


Product Information

HPV 3.5

LCD-Array Kit



For Research Use Only [RUO]

Parallel detection of 32 human papilloma virus types



Simple

PCR based macro array assay on polymer supports.



Robust

Non fluorescent detection chemistry.



Fast

120 minutes PCR, 45 minutes array protocol.



Cost efficient

Minimal lab instrumentation required.



Reliable

Automatic, software assisted data read-out.

Technology for your daily routine.

Assay Principle

Biotinylated PCR products are generated from sample material containing extracted HPV DNA. The labeled amplicons are hybridized to subtype specific capture probes immobilized on the LCD-Chip surface. Following a short wash routine, comprising high stringency, visualization of bound amplicons is mediated by an enzyme-substrate cascade. Each LCD-Chip contains eight identical micro arrays separated in small reaction chambers. Each array can be addressed individually, allowing the parallel analysis of eight samples on one chip. Following PCR amplification the array processing and analysis takes 45 minutes.

Specificity & Sensitivity

The binding sites for the supplied PCR primer mixes are well conserved within the L1 genes of the recognized HPV types and the probes spotted on the array have been thoroughly evaluated for their type specificity. Two primer sets for PCR amplification are provided. One based on the published and commonly used MY11/MY09 system and a second, producing shorter amplicons of ~150 bp in length. Combining both PCR reactions guarantees excellent coverage and sensitivity, and makes the assay well suited for the analysis of HPV types from formalin-fixed, paraffin-embedded (FFPE) tissue sections.

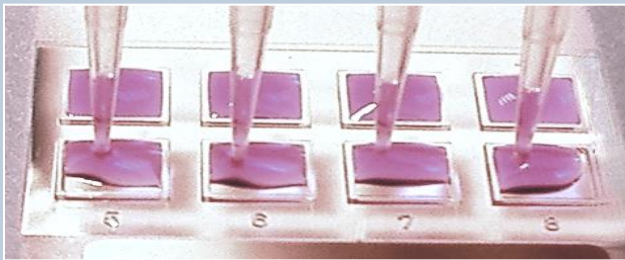
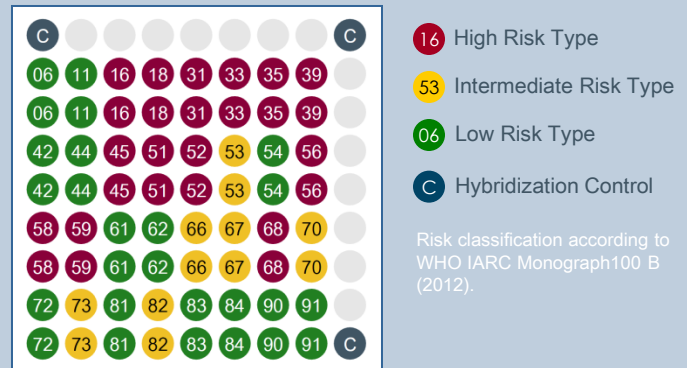


Fig.1: Parallel analysis of eight samples on one LCD-Chip. The array field spacing is compatible with standard multi pipettes.

Array Pattern



Infection with a single HR type

Multiple infection with HR & LR types



A) Images of array fields, superposed with analyses grids
B) Assignment of color codes according to risk classification.

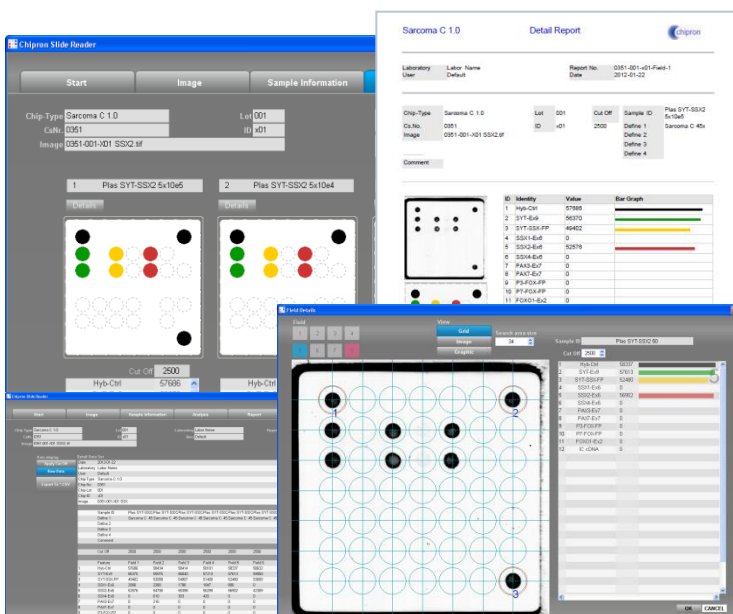
* Amplifications took place without the optional control primer mix directed against the human beta globin gene

Note that infections with two HPV types can make up to 25% and infections with more than two HPV types up to 15% of HPV positive cases. [Dunne et al., JAMA, Feb. 28, 2007-Vol 297, No. 8]

Software

SlideReader V12

- Fully automated image analysis
- Data reports in PDF format
- Win XP & WIN7 compatible



Instruments

CHIP-Scanner PF7250u



- Transmission light scanner for LCD-Arrays,
- 10 µm resolution

CHIP Spin FVL2400



- Bench Top mini centrifuge
- 2400 rpm, constant
- Adaptor for LCD-Arrays

Order Information	Cat. N°.
HPV 3.5 LCD-Array Kit, 32 Tests	V-100-04
HPV 3.5 LCD-Array Kit, 96 Tests	V-100-12
CHIP-Scanner PF7250u	HS-500-01
CHIP-Spin FVL2400	HS-300-01
SlideReader Software	HS-200-01